



Discovering Our Planet Together



Jaguars & Wildlife of Brazil's Pantanal

An In-Depth Foray into South America's Grandest Wildlife Realm



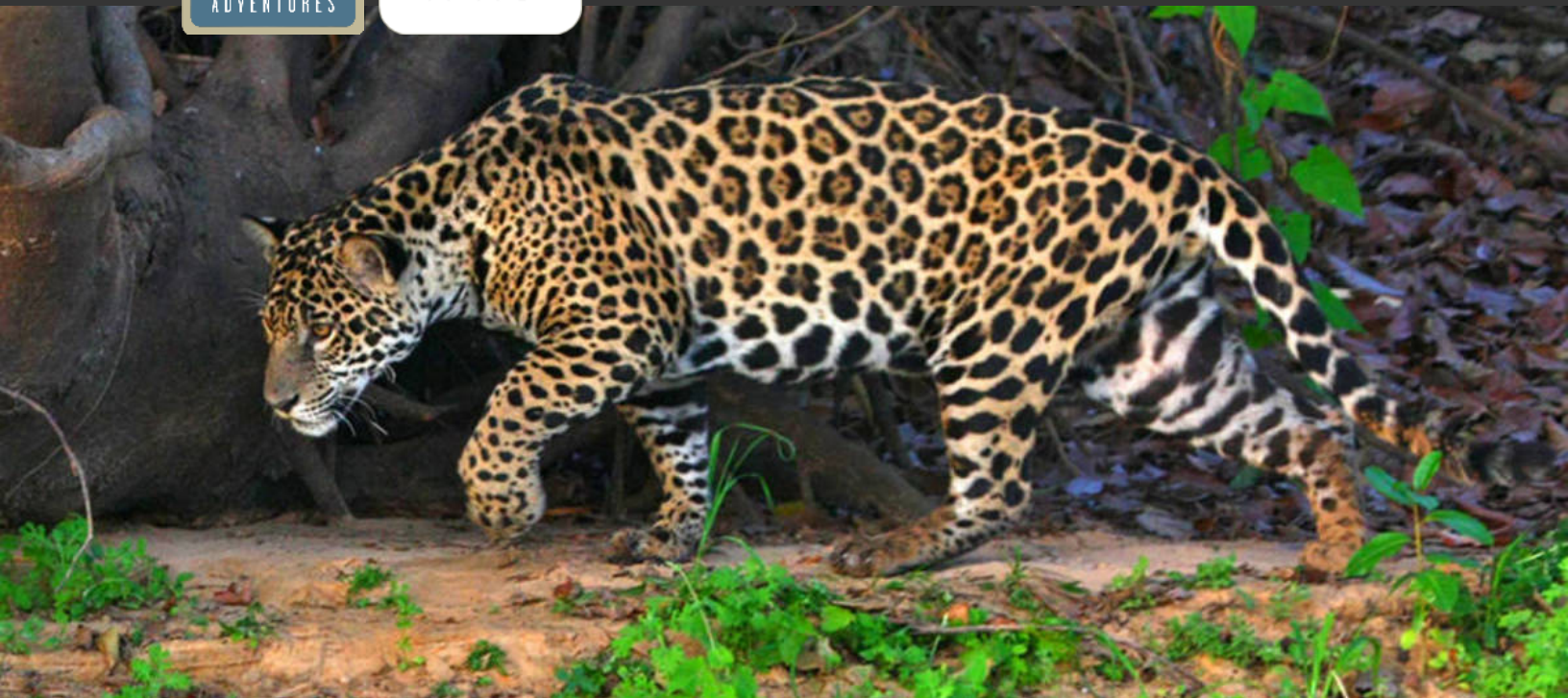
Discovering Our Planet Together

Table of Contents:

Trip Overview	3
Trip Itinerary	4
Trip Accommodations	8
What Makes Nat Hab Different?	10
Make It Private	12
Dates & Pricing Information	13



Discovering Our Planet Together



Trip Details:

Days:
11 Days

Price:
From \$10495
(+ Air)

Physical Requirements:
Moderate

Jaguars & Wildlife of Brazil's Pantanal

An In-Depth Foray into South America's Grandest Wildlife Realm

While the Amazon may be better known, the Pantanal offers South America's greatest wildlife extravaganza. This UNESCO Biosphere Reserve is the world's largest seasonal floodplain, sprawling over 75,000 square miles in the heart of the continent and containing its densest concentration of wildlife. The vast mosaic of marsh and islands is home to 10 million caiman, 650 bird species and 100 different mammals, including capybara and maned wolf. The Pantanal's freshwater wetlands support a profusion of aquatic fauna that attracts a host of larger predators, creating a huge, intricate food chain. At the top is the elegant and elusive jaguar—and our comprehensive Pantanal adventure offers the world's best chance to see them! On foot, by boat and 4x4, explore the Pantanal's verdant recesses on South America's most epic wildlife safari.

Trip Highlights

Alongside expert naturalist guides, discover South America's largest wildlife sanctuary—the best place on the planet to spot jaguars in the wild!

Explore by boat in the north, then on 4x4 drives and safari walks in the south—you won't find a more varied or comprehensive Pantanal itinerary

Enjoy an exclusive stay at Caiman Ecological Refuge, our remote and secluded base to seek out the giant anteater, tapir, ocelot and hyacinth macaw



Discovering Our Planet Together



Itinerary At A Glance

Day 1

Sao Paulo, Brazil

Day 2

Sao Paulo / Cuiaba / North Pantanal

Day 3

Exploring the North Pantanal

Day 4

North Pantanal / Porto Jofre—Jaguar Viewing

Days 5 & 6

Porto Jofre—Jaguar & Wildlife Viewing

Day 7

Porto Jofre / South Pantanal—Chartered Flight to Caiman Ecological Refuge

Days 8 & 9

Exploring the South Pantanal

Jaguars & Wildlife of Brazil's Pantanal Itinerary

An In-Depth Foray into South America's Grandest Wildlife Realm

Day 1: Sao Paulo, Brazil

Arrive in Sao Paulo and transfer to our boutique hotel in the upscale Jardins district, a leafy, low-rise oasis in the heart of this burgeoning city. Our Brazil adventure begins with a welcome dinner this evening.





Itinerary At A Glance

Day 10

Caiman Ecological Refuge /
Campo Grande

Day 11

Campo Grande / Depart

Day 2: Sao Paulo / Cuiaba / North Pantanal

Fly this morning to Cuiaba, then transfer by road to Araras Ecological Reserve in the northern Pantanal. Declared a World Heritage Site and Biosphere Reserve by UNESCO in 2000, the Pantanal's vast expanse of wet marshlands and dry islands is South America's primary wildlife sanctuary. Its name derives from the Portuguese word *pantano*, meaning "swamp." With rhythmic regularity, this vast depression in the center of South America floods with the annual rains, submerging most of its environs. As the waters recede during the dry season, they leave a mosaic of pools and marshes where a plethora of life flourishes in intense concentration. Some 3,500 different plants thrive here, and the Pantanal is home to 10 million caiman, 650 bird species, 400 kinds of fish, myriad reptiles and amphibians, and more than 100 mammal species. Wandering the nature trails around the lodge, we get our first sense of the wondrous biodiversity that awaits our exploration.

Day 3: Exploring the North Pantanal

Covering 75,000 square miles across Brazil, Bolivia and Paraguay, the Pantanal is the world's largest wetland, containing 12 subregional ecosystems including semi-arid woodland and tropical savanna. Our immersion begins with a morning nature walk with our Expedition Leader and local guides who are resident experts on the flora and fauna. We'll hope to see some of the region's threatened species including giant armadillo and capybara, plus spectacular birdlife. While their habitat is under duress due to the expansion of ranching, mining and farming, it is reassuring to know our presence contributes to the economic value of conserving this incomparable wildlife realm. This afternoon, explore the Pantanal savanna by safari vehicle, then finish our day's adventures with a night drive, hoping to spot nocturnal wildlife en route to the lodge.

Day 4: North Pantanal / Porto Jofre—Jaguar Viewing

On a sunrise nature walk from our ecolodge, listen to the chorus of birdsong and monkey calls announcing a new day. After breakfast, depart for Porto Jofre via the Trans-Pantanal Highway, which traverses some of the best wildlife viewing areas in the ecosystem. Along this remote dirt road that crosses 123 bridges, search for caiman, capybara, giant anteater, anaconda, jabiru stork, macaws and more. Our destination is Porto Jofre, where the highway ends at the Cuiaba River—an important port for transporting cattle and agricultural products from the Pantanal along the road artery to the town of Pocone and beyond. After lunch on arrival, set out in open skiffs for our first jaguar watch, scanning the riverbanks for glimpses of the stealthy cats. This region has the highest density of jaguars in the entire Pantanal, and our odds of seeing them are excellent, especially from mid-June to mid-October. The jaguar—the largest wild cat in the Americas—is the top predator in the ecosystem, drawn to the abundance of food sources that thrive here.



Days 5 & 6: Porto Jofre—Jaguar & Wildlife Viewing

The area around Porto Jofre offers exceptional wildlife encounters, and our focus is on sighting jaguars and giant otters. We look for them and a multitude of other Pantanal species, including caiman, capybara, toucans and howler monkeys, on private morning and afternoon small-boat excursions. Outings on the river also reveal scores of waterbirds, reptiles and plant species that thrive in the sprawling mosaic of lakes, lagoons, rivers and marshes. Fish flourish in this freshwater sea, too, and as the water level drops seasonally in the lakes and channels, fishermen can sometimes catch dorado, pacu and traíra by hand. Birds large and small fly overhead and feed at eye level.

Day 7: Porto Jofre / South Pantanal—Chartered Flight to Caiman Ecological Refuge

This morning, fly via chartered small plane directly to Caiman Ecological Refuge, enjoying dramatic aerial views and avoiding a rugged 10-hour drive. Deep in the green recesses of the South Pantanal, this renowned ecolodge is our base for private exploration. It lies at the remote heart of a 130,000-acre sustainable cattle ranch, and the atmosphere reflects the distinctive local cowboy culture, which taps 200 years of combined Portuguese, Paraguayan and indigenous traditions. The lodge was the first ecotourism operation in the region and remains a conservation leader. When the refuge was established, 10% of the ranch acreage was set aside as a private conservation area, off-limits to cattle but open to visitors. The protected area, chosen with the aid of research scientists from the University of Sao Paulo, is remarkably diverse, with habitats encompassing wooded and scrubby savanna, open pasture, stands of caranda palm, hammock forests, streams and seasonal channels—all providing sustenance for numerous Pantanal species, including Brazilian tapir. This afternoon, we head out on a private wildlife drive in the Caiman Ecological Refuge, perhaps providing our first jaguar sighting in the south.

Days 8 & 9: Exploring the South Pantanal

A range of activities in the refuge offers varied perspectives on the South Pantanal. Depending on seasonal conditions, we may take nature walks and day and night 4x4 safaris in open-sided trucks. Local guides join our Expedition Leader to reveal and interpret the area's many natural phenomena. Wildlife abounds in the vicinity, and the refuge is the site of the Onçafari Jaguar Project. This new conservation initiative aims to promote wildlife ecotourism in the Pantanal by habituating jaguars to vehicles so people can observe them while on safari. With patience and luck, we hope to be among the fortunate few to see wild jaguars here, as sightings continue to increase with concerted conservation efforts. On clear nights from mid-June to mid-October, the starry skies overhead are spectacular, and we may have the chance to view planets and constellations through powerful telescopes during evening astronomy programs around the campfire.



Day 10: Caiman Ecological Refuge / Campo Grande

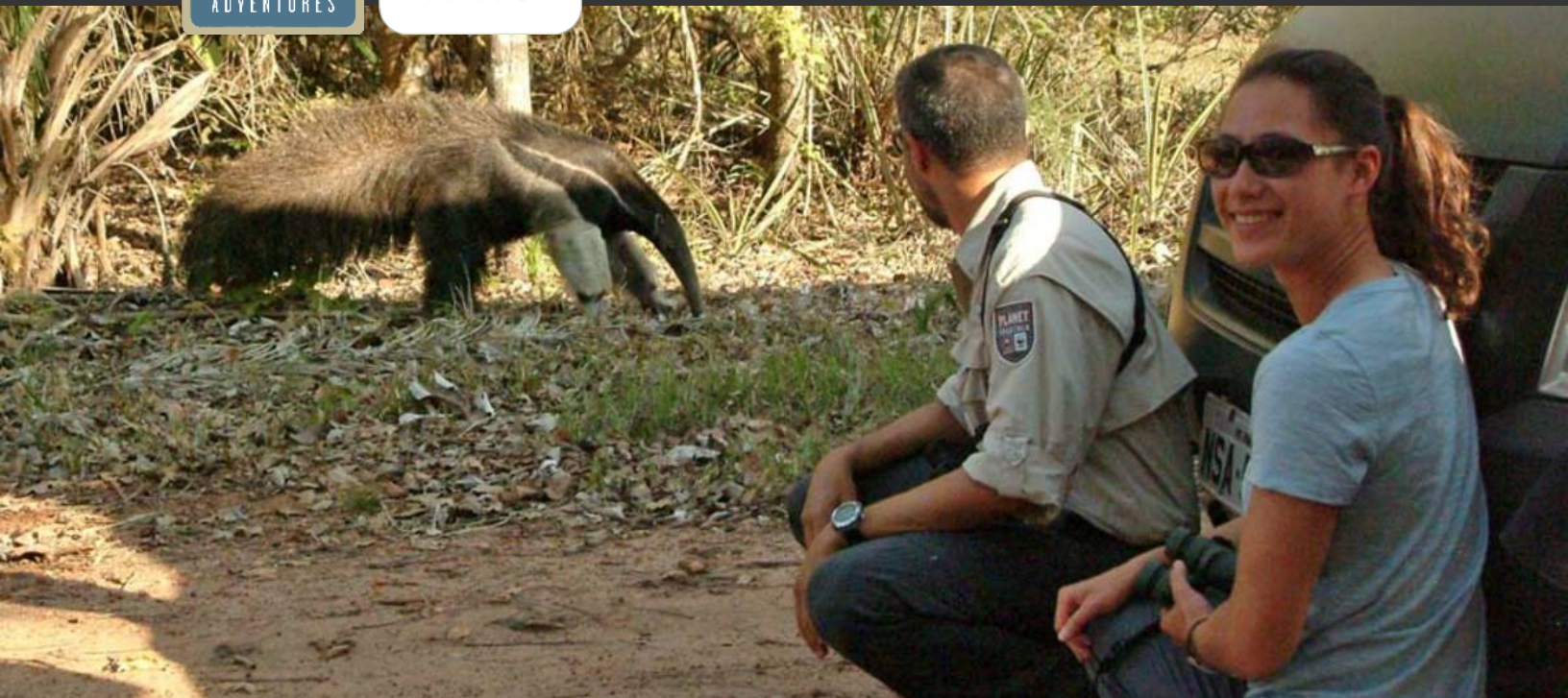
After a last morning nature activity at Caiman Ecological Refuge, we drive to Campo Grande and check in to our hotel. Campo Grande is the capital and largest city in the Brazilian state of Mato Grosso do Sul. Highly multicultural with a distinctive mixed-ethnic heritage, Campo Grande's population includes immigrants and descendants from Japan, the Middle East, Armenia, Portugal, Germany, Italy, Spain and Paraguay who have mixed with indigenous Amerindian peoples and Afro-Brazilians. This evening, reflect on highlights of our adventure over a farewell dinner.

Day 11: Campo Grande / Depart

A transfer is provided to the airport this morning to meet flights departing for home, or to continue on our Iguazu Falls Extension.



Discovering Our Planet Together



Accommodation Details:

Hotel Unique

Araras Ec lodge

Hotel Pantanal Norte

Pantanal Jaguar Camp

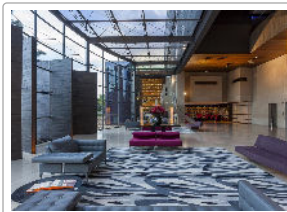
Caiman Ecological Refuge

Hotel Deville Prime Campo Grande

For detailed descriptions, visit nathab.com/south-america/brazil-adventure/accommodations/

Jaguars & Wildlife of Brazil's Pantanal Accommodations

An In-Depth Foray into South America's Grandest Wildlife Realm



Hotel Unique

Located in Sao Paulo's trendy Moema neighborhood, this award-winning luxury hotel was designed to maximize sweeping views from the rooftop bar, restaurant and swimming pool.



Araras Ec lodge

Located in the northern sector of the Pantanal, South America's premier wildlife sanctuary, this rustic lodge enjoys a superb location for exploring the region's varied habitats and intense biodiversity.



Hotel Pantanal Norte

Situated in the heart of the Pantanal's best jaguar habitat, this remote family-run hotel is optimally located for jaguar tracking and wildlife viewing along the rivers that lace the region.



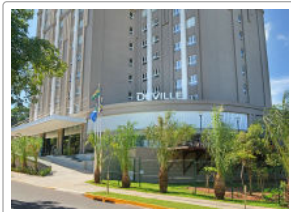
Pantanal Jaguar Camp

Owned and run by a local naturalist guide and conservationist, this rustic ecolodge offers simple but comfortable accommodations in an unparalleled location, two minutes' walk to the river that is Brazil's top jaguar-viewing location.



Caiman Ecological Refuge

Located within an enormous private reserve deep in the heart of the Pantanal, this ecolodge offers comfortable accommodations, varied activities, and by far the best wildlife viewing in the area.



Hotel Deville Prime Campo Grande

Surrounded by green space next to the sprawling Indigenous Nations Park in downtown Campo Grande, this hotel offers contemporary comforts in the heart of the city's landmarks.



No One Shows You the Pantanal in Such Depth!

Encompassing vast rain forests, wild ocean coast and the world's largest wetland—the Pantanal—Brazil is a must for nature lovers. And our nature-intense itinerary immerses you in the wildlife mecca of the Pantanal in greater depth than any other trip we're aware of. See what sets this adventure apart:

1 The Very Best Locations for Wildlife Viewing

In the Pantanal, wildlife is even more abundant than in the Amazon. We may see Brazilian tapir, capybara, giant armadillo, giant river otter, maned wolf, caiman and the top prize for most wildlife watchers, the elusive jaguar. But you can't stay just anywhere in this massive marsh and expect those rewards. An itinerary must be strategically based around the best wildlife-viewing locations, and this one won't let you down.

2 More Time in the Pantanal from Multiple Perspectives

We spend seven full days at three different locations in both the north and south Pantanal to fully immerse you in this UNESCO World Heritage Site and Biosphere Reserve. We explore this vast mosaic of flooded marshlands, dry islands and savanna via multiple means, from nature walks and 4x4 drives to boat rides and canoe safaris—each mode revealing a new vantage point on the varied landscapes and their wild inhabitants.

3 Private Chartered Flight from North to South—a Nat Hab Exclusive!

Getting from the northern part of the Pantanal to the south can be a challenge. But rather than subject you to a 10-hour drive over rough, remote roads, plus two short commercial flights in between, which most travelers must endure, we charter four-passenger planes to fly directly to Caiman Ecological Refuge. It's not only a far more comfortable and efficient option, but you'll get a 360-degree aerial view that reveals the vastness of the Pantanal—a perspective few visitors get to see.

4 Our Lodgings Immerse You in Nature—including Caiman Ecological Refuge

We choose our accommodations for comfort, but especially for their superb locations where wildlife viewing is best. We spend three nights in the remote Porto Jofre region, where more jaguars are seen than anywhere else. Another highlight is Caiman Ecological Refuge, part of an acclaimed private research, conservation and ecotourism initiative. Unlike more-touristed Pantanal accommodations, this exclusive ecolodge enjoys a remote, private setting, with ever-increasing jaguar sightings.



5 A Very Small Group (10 Travelers Max) Ensures Intimate Wildlife Encounters

To foster the most meaningful nature encounters, we limit our group to no more than 10 travelers. A small group also ensures that your needs and expectations are attentively met, and you get plenty of individual attention from our Expedition Leader.

6 Your Expedition Leader is a Top Professional Naturalist

Nat Hab has a well-deserved international reputation for the highest-quality Expedition Leaders in the industry. Our Brazil guides average 10 years of experience, with additional training and resources from WWF scientists. In the Pantanal, we are also joined by local guides from each lodge who are resident experts in the region's flora and fauna.

7 Our Quality-Value Guarantee Ensures Your Exceptional Brazil Adventure

With Natural Habitat Adventures, you receive our exclusive guarantee that clearly states that we will meet the high expectations we set forth in our promotional materials. To our knowledge, this is the most ambitious guarantee made by any adventure travel company.

8 Feel Good About Your Carbon-Neutral Journey

We care deeply about our planet, as we know you do. When you travel with us, the carbon emissions from your trip are 100% offset—including your round-trip flights from home. Natural Habitat Adventures has been the world's first carbon-neutral travel company since 2007.

9 Natural Habitat Adventures is WWF's Travel Partner

Because of our commitment to environmentally friendly travel, as well as the exceptional quality of our small-group nature adventures, World Wildlife Fund, the world's leading environmental conservation organization, has named Natural Habitat Adventures its worldwide travel partner—a designation that makes us exceedingly proud!





Make It Private with Your Family or Friends

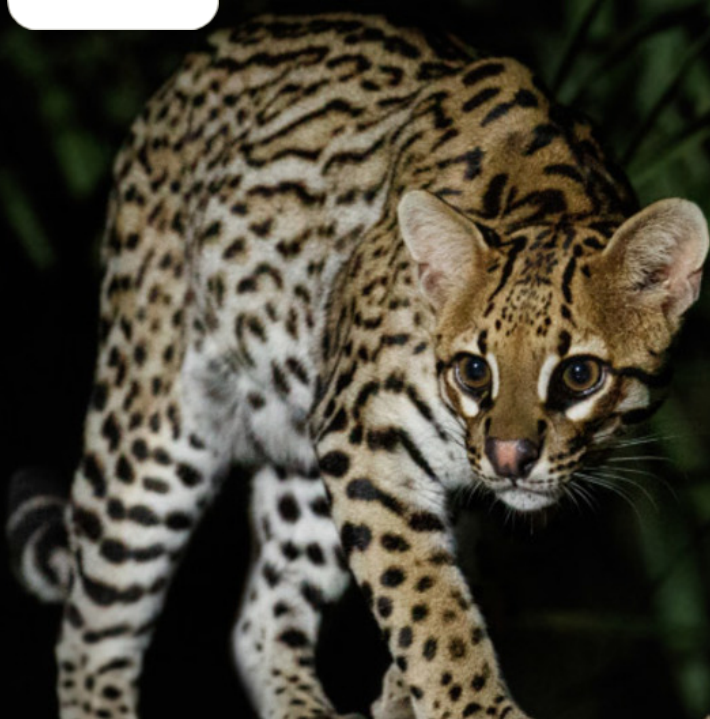
Travel privately, exclusively with your immediate family, multi-generational family or group of friends. And when you choose a private departure, you're assured the most exclusive and authentic Pantanal adventure on offer. Here are some of the advantages when you Make It Private:

- 1 Your private group of family or friends, with special activities for kids
- 2 Your own private naturalist guide
- 3 Private charter flight to Caiman Ecological Refuge
- 4 Your own vehicles for the utmost in flexibility
- 5 Private wildlife viewing excursions throughout
- 6 Surprisingly affordable pricing

This **Make It Private** option is available on nearly every Nat Hab trip for family and friend groups. Call an Adventure Specialist at 800-543-8917 or look for the "Make It Private" icon in the **pricing section** of a trip online at nathab.com to see prices based on your specific group size.



Discovering Our Planet Together



Dates & Pricing Summary:

Prices:
From \$10495
(+ Air)

Location:

Group Size:
Limited to ~10
Travelers

Physical Requirements:
Moderate

Jaguars & Wildlife of Brazil's Pantanal Dates, Pricing & Info

An In-Depth Foray into South America's Grandest Wildlife Realm

2022 Departures

Departure	Return	Notes
Jun 13, 2022	Jun 23, 2022	
Jun 17, 2022	Jun 27, 2022	
Jun 24, 2022	Jul 4, 2022	
Jun 27, 2022	Jul 7, 2022	
Jul 1, 2022	Jul 11, 2022	
Jul 4, 2022	Jul 14, 2022	
Jul 8, 2022	Jul 18, 2022	
Jul 11, 2022	Jul 21, 2022	
Jul 15, 2022	Jul 25, 2022	



Discovering Our Planet Together

Dates & Pricing Summary:

Prices:
From \$10495
(+ Air)

Location:

Group Size:
Limited to ~10
Travelers

Physical Requirements:
Moderate

Departure	Return	Notes
Jul 22, 2022	Aug 1, 2022	
Jul 25, 2022	Aug 4, 2022	
Jul 29, 2022	Aug 8, 2022	
Aug 1, 2022	Aug 11, 2022	
Aug 5, 2022	Aug 15, 2022	
Aug 8, 2022	Aug 18, 2022	
Aug 12, 2022	Aug 22, 2022	
Aug 15, 2022	Aug 25, 2022	
Aug 19, 2022	Aug 29, 2022	
Aug 22, 2022	Sep 1, 2022	Habitat Club Pricing Available
Aug 26, 2022	Sep 5, 2022	
Aug 29, 2022	Sep 8, 2022	
Sep 2, 2022	Sep 12, 2022	
Sep 9, 2022	Sep 19, 2022	
Sep 12, 2022	Sep 22, 2022	
Sep 16, 2022	Sep 26, 2022	
Sep 19, 2022	Sep 29, 2022	
Sep 23, 2022	Oct 3, 2022	

2023 Departures

Departure	Return	Notes
Jun 12, 2023	Jun 22, 2023	
Jun 16, 2023	Jun 26, 2023	
Jun 19, 2023	Jun 29, 2023	



Discovering Our Planet Together

Dates & Pricing Summary:

Prices:

From \$10495
(+ Air)

Location:

Group Size:

Limited to ~10
Travelers

Physical

Requirements:

Moderate

Departure	Return	Notes
Jun 23, 2023	Jul 3, 2023	
Jun 26, 2023	Jul 6, 2023	
Jun 30, 2023	Jul 10, 2023	
Jul 3, 2023	Jul 13, 2023	
Jul 7, 2023	Jul 17, 2023	
Jul 10, 2023	Jul 20, 2023	
Jul 14, 2023	Jul 24, 2023	
Jul 17, 2023	Jul 27, 2023	
Jul 21, 2023	Jul 31, 2023	
Jul 28, 2023	Aug 7, 2023	
Jul 31, 2023	Aug 10, 2023	
Aug 4, 2023	Aug 14, 2023	
Aug 7, 2023	Aug 17, 2023	
Aug 11, 2023	Aug 21, 2023	
Aug 14, 2023	Aug 24, 2023	
Aug 18, 2023	Aug 28, 2023	
Aug 21, 2023	Aug 31, 2023	
Aug 25, 2023	Sep 4, 2023	
Aug 28, 2023	Sep 7, 2023	
Sep 4, 2023	Sep 14, 2023	
Sep 11, 2023	Sep 21, 2023	
Sep 18, 2023	Sep 28, 2023	
Sep 22, 2023	Oct 2, 2023	



Pricing

2022 Prices

▶ Trip Prices

\$10495 to \$10995 (+internal air)

Internal Air Cost: \$1495 per person (this will be listed separately on our invoicing).

Single Occupancy: For a single room add \$2995.

Deposit: \$500 per person (nonrefundable)

View pricing Trip prices are per person based on double occupancy and are given in U.S. dollars.



Group Size

Limited to ~10 Travelers

A very important feature of our Brazil ecotourism adventure is the limited group size, as nature encounters are best experienced in the quiet, intimate, low-impact context of a small groups of travelers. Our Brazil Pantanal adventure welcomes a maximum of 11 travelers.

Take this trip on a private basis, traveling exclusively with your immediate family, multi-generational family or group of friends. for details and pricing.

Included

- ▶ **Trip price includes:** Accommodations, services of Nat Hab's professional Expedition Leader(s), local guides and lodge staff, all meals from dinner on Day 1 through breakfast on Day 11, most gratuities, airport transfers on Day 1 and final day, all activities and entrance fees, all taxes, permits and service fees.
- ▶ **Internal air cost includes:** All flights within the itinerary (this will be listed separately on our invoicing).

Not Included

Travel to and from the start and end point of your trip, alcoholic beverages, some gratuities, passports and visa fees, optional activities, items of a personal nature (phone calls, laundry and internet, etc.), airline baggage fees, airport and departure taxes (if any), required medical evacuation insurance, optional travel protection insurance.

Physical Requirements

Moderate

While this trip does not require a substantial degree of physical fitness, in order to participate fully in this itinerary, guests should be able to undertake several walks and hikes that are typically two to three miles in length, over mostly flat and dry but sometimes uneven terrain. The longest walk is in the Pantanal, three miles over flat terrain. Brazil can be very hot and humid, and guests will often spend several hours at a stretch on walks, drives or boat rides. Sturdy walking shoes with good traction are



recommended. All activities are optional.

On custom or private departures with smaller groups, our ability to accommodate varying levels of physical abilities or interests is limited, since these trips are staffed with a single Expedition Leader who may be assisted, pending availability, by local guides.

Mandatory Insurance

Since the areas we travel to are remote and wild (that's why we go there!), we strongly recommend that all guests have, at minimum, medical evacuation insurance for this program. While this is not required, we make this strong suggestion in the interest of our guests' safety. We recommend that your chosen independent insurance plan includes at least \$250,000 in medical evacuation coverage.

To protect your investment and to provide peace of mind while you travel, we also strongly recommend purchasing comprehensive travel insurance. Plans may cover everything from medical treatment to trip cancellations and delays and lost luggage. Please contact our office if you would like more information about the medical evacuation and comprehensive travel insurance policies we offer by calling 800-543-8917.

Getting There & Getting Home

Arrival: Arrive in Sao Paulo by 4 pm in order to attend a welcome dinner beginning at 7 pm on Day 1.

Departure: You may depart Campo Grande at any time on Day 11.

We can best serve you if our Natural Habitat Adventures Travel Desk makes your reservations, as we are intimately familiar with the special requirements of this program and can arrange the most efficient travel. Please call us at 800-543-8917. Note that while we offer you the best possible rates available to us on airfare and additional nights' accommodations, you may find special web rates or better fares online.



Natural Habitat & WWF: Discovering Our Planet Together

Natural Habitat Adventures • PO Box 3065 • Boulder, CO 80307

USA & Canada: 800-543-8917 • International: +1-303-449-3711

© 2022 Natural Habitat Adventures

Since 2003, Nat Hab has donated more than \$4.5 million to WWF's global conservation efforts and will continue to give 1% of gross sales plus \$150,000 annually through 2023 in support of WWF's mission to conserve nature and reduce the most pressing threats to the diversity of life on Earth. WWF® and ©1986 Panda Symbol are owned by WWF. All rights reserved.