



Discovering Our Planet Together



The Great Namibia Wildlife Safari

Search for Desert Rhino & Other Rare Wildlife on an Exclusive Fly-In Adventure



Discovering Our Planet Together

Table of Contents:

Trip Overview	3
Trip Itinerary	4
Trip Accommodations	6
What Makes Nat Hab Different?	8
Make It Private	10
Dates & Pricing Information	11



Discovering Our Planet Together



Trip Details:

Days:
10 Days

Price:
From \$11995
(+ Air)

Physical Requirements:
Easy to Moderate

The Great Namibia Wildlife Safari

Search for Desert Rhino & Other Rare Wildlife on an Exclusive Fly-In Adventure

Namibia is soul-stirring. Here on the southwest edge of Africa, burnt-orange dunes rise a thousand feet high against a cobalt sky. Inside are diamonds, tucked into the mountains of sand by waves and wind. The coastal desert is washed by the relentless ocean, while inland, the sun bakes the plains into a cracked puzzle of dried mud, pocked with enough grass and thornbush to sustain desert rhinoceros and other rare species uniquely adapted to survive in these daunting environs. Raptors survey arid canyons that slice through vast plateaus, and dry riverbeds run like veins across the landscape. There is water here, too, although its presence is subtle. At times, life is sustained merely by remnants of fog that drift in from the sea. In the stark Etosha salt pan, waterholes attract game pursued by feline predators. Springbok, oryx, kudu and dik-dik run to elude them in a great and ancient desert dance.

Trip Highlights

Delve into the vast nature reserves of Kulala, Palmwag and Ongava, filled with rare and endemic wildlife, though never with crowds

Track rhinos on foot from Desert Rhino Camp in the remote Palmwag Concession, and search for other uniquely desert-adapted species

Fly between luxury camps enveloped in silent wilderness, maximizing time for wildlife viewing and exploring the desert landscape



Discovering Our Planet Together



Itinerary At A Glance

- Day 1**
Windhoek, Namibia
- Days 2-4**
Private Kulala Wilderness Reserve—Sossusvlei Dunes
- Days 5 & 6**
Palmwag Concession—Rhino Tracking
- Days 7-9**
Etosha National Park—Ongava Private Reserve
- Day 10**
Windhoek / Depart

The Great Namibia Wildlife Safari Itinerary

Search for Desert Rhino & Other Rare Wildlife on an Exclusive Fly-In Adventure

Day 1: Windhoek, Namibia

Our Namibia wildlife safari begins on arrival in Windhoek. Namibia's capital is a modern, walkable city with an eclectic urban skyline featuring both contemporary and colonial architecture, from German castles and cathedral spires to glass skyscrapers. There's time to relax this afternoon at our boutique hotel in a tranquil neighborhood before a welcome dinner with our Expedition Leader.





Days 2–4: Private Kulala Wilderness Reserve—Sossusvlei Dunes

Fly by light aircraft to Little Kulala, a luxurious retreat inside the private 90,000-acre Kulala Wilderness Reserve on the edge of Namibia's great sand sea. The word *namib* in the Nama language means "vast," an apt name for this ancient arid expanse—the world's oldest desert. Wildlife drives at sunrise take us into Sossusvlei, a salt and clay pan surrounded by shape-shifting sand dunes. Framed by intense blue skies, the world's tallest dunes glow deep carnelian at dawn, changing minute by minute as the sun climbs, to rose, burnt orange and ochre. Inside are diamonds, tucked into the sand mountains by currents, waves and wind. Remarkably, these dunes are home to a host of desert species, including oryx, ostrich, springbok, spotted and brown hyena, aardwolf and bat-eared fox. The rare dune lark's entire habitat is confined to this area. Discover the desert's subtle magic on short walks and safari drives. From Little Kulala's profoundly secluded vantage point, experience some of Africa's most arresting vistas, including vermilion sunsets and unparalleled stargazing.

Days 5 & 6: Palmwag Concession—Rhino Tracking

Fly north to the private million-acre Palmwag Concession. Our destination, Desert Rhino Camp, lies at the heart of this vast reserve in Damaraland, one of Africa's last great wildernesses. Few safari locales offer the level of isolation found here. The raw landscape is defined by ancient riverbeds, open plains, stacked granite rocks and deep gorges. Within these stark environs, freshwater springs support healthy numbers of wildlife, including Africa's largest population of free-roaming black rhinos. We'll track this endangered icon in the company of rhinoceros experts from Save the Rhino Trust and researchers based at the camp. To search for rhinos on foot is a rare and exhilarating experience. Taking care to stay downwind, silent and hiding behind scrub bushes, we hold our breath in anticipation of spying this ancient desert dweller. On 4x4 drives, look also for desert-adapted elephant, endemic Hartmann's mountain zebra, giraffe, oryx, gemsbok, springbok, greater kudu and possibly even predators. Birds are abundant, with a number of southern African endemics.

Days 7–9: Etosha National Park—Ongava Private Reserve

Today we fly to the Ongava Game Reserve bordering Etosha National Park. Within this private concession, wildlife thrives while visitors are few. Our focus is the Etosha Salt Pan, the remnant of a huge lake that existed here 2 million years ago. Bare and dry today, the depression offers Namibia's best wildlife viewing, with elephant, black and white rhinoceros, lion, leopard, cheetah, giraffe, zebra, wildebeest, hartebeest, springbok, oryx, kudu and the diminutive dik-dik drawn to the many life-sustaining waterholes. Birdlife is prolific, and we may see ostrich and raptors. From camp, take guided walks (safety permitting) and night drives on the reserve, traveling into the adjacent national park by day, then retreating to solitude each evening.

Day 10: Windhoek / Depart

Our Namibia safari concludes as we fly from Ongava back to Windhoek to connect with departing flights.



Discovering Our Planet Together



Accommodation Details:

Olive Grove Guest House

Little Kulala

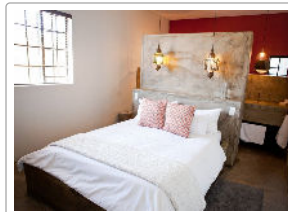
Desert Rhino Camp

Ongava Tented Camp

For detailed descriptions, visit nathab.com/africa/the-great-namibia-wildlife-safari/accommodations/

The Great Namibia Wildlife Safari Accommodations

Search for Desert Rhino & Other Rare Wildlife on an Exclusive Fly-In Adventure



Olive Grove Guest House

This intimate guesthouse enjoys a tranquil location close to the city center of Windhoek, offering 11 guest rooms with lavish bathrooms and private verandas incorporating extensive local stone.



Little Kulala

Inside a private reserve with direct access to the towering sand dunes of Sossusvlei, 11 thatched villas offer magnificent scenery, private plunge pools and rooftop skybeds for stargazing.



Discovering Our Planet Together



Desert Rhino Camp

This simple yet comfortable camp, run in conjunction with Save the Rhino Trust, offers a thrilling location from which to track rare desert-adapted black rhinos alongside community trackers.



Ongava Tented Camp

Built of stone, canvas and thatch, eight Meru-style tents feature earth tones in harmony with the surrounding environs—the private Ongava Reserve, where wildlife abounds apart from crowds.



Our Namibia Safari is Truly Distinctive

Namibia's dramatic desert landscapes and uniquely adapted wildlife make for an especially intriguing safari experience. But less-informed safari-goers can easily end up in large impersonal lodges, viewing wildlife in public parks from tarmac roads alongside many other vehicles. With our focus on personalized wildlife encounters and our long history in Namibia (our founder performed one of Namibia's first ecotourism surveys in 1990), we are uniquely qualified to show you Namibia's vast and mesmerizing wilderness. Here's how we promise a truly exceptional Namibia safari:

- 1 Maximum Group Size Is Just Seven Travelers**

An authentic encounter with nature is hard to achieve outside of a small group. While Namibia's paved road system encourages a more "bus-like" safari approach in many popular places, we limit our groups to just seven guests, allowing us to access remote areas that mini buses can't get to.
- 2 Chartered Flights Maximize Your Time on Safari**

We opt for light aircraft transfers to maximize your time with wildlife, rather than negotiating rough and dusty roads between destinations. And from the air, you'll gain a whole different perspective on Namibia's stunning landscapes.
- 3 Private Reserves Offer Seclusion & Exclusive Activities**

Private reserves are essential to an optimal Namibia safari. From the million-acre Palmwag Concession to the Ongava and Kulala wilderness reserves—private concessions adjacent to national parks—we view abundant wildlife away from crowds (since most visitors are traveling on paved and gravel roads inside the parks). When we do visit the national parks, we enter prime wildlife-viewing areas quickly and return to our private reserves for a much quieter experience. We also enjoy exclusive activities not permitted in the parks, such as safari walks and night drives. And from fly-in Desert Rhino Camp, we have the rare chance to track endangered desert rhinos alongside conservation experts and researchers.
- 4 Exclusive Opportunities to Explore on Foot, Including Rhino Tracking**

Guided bush walks are available on private reserves—rare opportunities to stretch your legs while on safari. Track rhino on foot during our stay at exclusive Desert Rhino Camp, a remote outpost that gives you the best access in Namibia to view this endangered species. And consider an optional climb up the sand dunes at Sossusvlei for a perspective on the landscape that most safari-goers confined to vehicles miss.



5 An Open "Window" Seat for Everyone

We limit our capacity to just seven travelers per vehicle on wildlife drives, assuring unimpeded views, maximum comfort and the best photo opportunities. In the Sossusvlei region, we explore in spacious closed vehicles that provide protection from wind and sand, with eight cushioned seats plus ample room for your gear. In less-sandy regions, our private chartered safari vehicles have open sides (no glass to interfere with your view) and 10 cushioned passenger seats—one in front next to the driver, followed by three rows of three seats each...lots of extra room for all!

6 Remote Accommodations in Harmony with the Landscape

The isolated luxury camps we've chosen are truly exceptional. Each is seamlessly integrated into the natural environment in a way that allows you to be fully absorbed in the landscape. Each tent or chalet also has a private veranda for personal wildlife viewing opportunities. We are proud to include a stay at rarely visited Desert Rhino Camp, located within the distant wilderness of the Palmwag Concession where many of the world's last desert rhinos still roam free.

7 Africa's Most Outstanding Safari Guides

We provide the personalized service of Namibia's top naturalist guides. We employ only the most highly trained and experienced Expedition Leaders, who accompany your group from start to finish. Rather than relying on less-qualified local camp guides at each stop, our Expedition Leaders are the best-trained safari guides in Africa, averaging 15 years' experience, with additional resources provided by WWF's leading scientists.

8 Our Quality-Value Guarantee Ensures Your Superior Namibia Safari

With Natural Habitat Adventures, you receive our exclusive guarantee, which clearly states that we will meet the lofty expectations we set in our promotional materials. To our knowledge, this is the most ambitious guarantee made by any adventure travel company.

9 Feel Good About Your Carbon-Neutral Journey

We care deeply about our planet, as we know you do. When you travel with us, the carbon emissions from your trip are 100% offset—including your round-trip flights from home. Natural Habitat Adventures has been the world's first carbon-neutral travel company since 2007.

10 Natural Habitat Adventures is WWF's Travel Partner

Because of our commitment to environmentally friendly travel, as well as the exceptional quality of our adventures, World Wildlife Fund—the world's leading environmental conservation organization—has named Natural Habitat Adventures as its worldwide travel partner, a designation that makes us exceedingly proud!





Make It Private with Your Family or Friends

Travel privately, exclusively with your immediate family, multi-generational family or group of friends. And when you choose a private departure, you're assured the most exclusive and authentic Namibia safari on offer. Here are some of the advantages when you Make It Private:

- 1 Your private group of family or friends, with special activities for kids
- 2 Your own private safari guide
- 3 Exclusive use of private safari vehicles
- 4 Private meals at safari camps
- 5 Surprisingly affordable pricing

This **Make It Private** option is available on nearly every Nat Hab trip for family and friend groups. Call an Adventure Specialist at 800-543-8917 or look for the "Make It Private" icon in the **pricing section** of a trip online at nathab.com to see prices based on your specific group size.



Discovering Our Planet Together



Dates & Pricing Summary:

Prices:
From \$11995
(+ Air)

Location:

Group Size:
Limited to 7
Travelers

Physical Requirements:
Easy to Moderate

The Great Namibia Wildlife Safari Dates, Pricing & Info

Search for Desert Rhino & Other Rare Wildlife on an Exclusive Fly-In Adventure

2022 Departures

Departure	Return	Notes
Jun 3, 2022	Jun 12, 2022	
Jun 9, 2022	Jun 18, 2022	
Jul 6, 2022	Jul 15, 2022	
Jul 13, 2022	Jul 22, 2022	
Aug 4, 2022	Aug 13, 2022	
Aug 22, 2022	Aug 31, 2022	
Sep 13, 2022	Sep 22, 2022	
Sep 21, 2022	Sep 30, 2022	
Oct 9, 2022	Oct 18, 2022	



Discovering Our Planet Together

Dates & Pricing Summary:

Prices:

From \$11995
(+ Air)

Location:

Group Size:
Limited to 7
Travelers

Physical Requirements:
Easy to Moderate

2023 Departures

Departure	Return	Notes
Jun 1, 2023	Jun 10, 2023	
Jun 7, 2023	Jun 16, 2023	
Jun 23, 2023	Jul 2, 2023	
Jul 4, 2023	Jul 13, 2023	
Jul 11, 2023	Jul 20, 2023	
Jul 23, 2023	Aug 1, 2023	
Aug 2, 2023	Aug 11, 2023	
Aug 8, 2023	Aug 17, 2023	
Aug 20, 2023	Aug 29, 2023	
Sep 11, 2023	Sep 20, 2023	
Sep 19, 2023	Sep 28, 2023	
Oct 7, 2023	Oct 16, 2023	



Discovering Our Planet Together

Pricing

2022 Prices

- **Trip Price**
\$11995 to \$12295 (+internal air)
- **Special Photo Tour Price (see details)**



Internal Air Cost: \$2684 per person (this will be listed separately on our invoicing).

Single Occupancy: For a single room add \$2495.

Deposit: \$500 per person (nonrefundable)

2023 Prices

We're still in the process of confirming 2023 pricing, which we plan to announce soon.

Contact an Adventure Specialist for more details: 800-543-8917.

Group Size

Limited to 7 Travelers

A very important feature of our Namibia safaris is the limited group size, as nature and wildlife encounters are most meaningful with fewer people, and our environmental footprint is lighter, too.

Take this trip on a private basis, traveling exclusively with your immediate family, multi-generational family or group of friends. for details and pricing.

Specialized 4x4 Land Rovers and Land Cruisers

An essential element that makes this safari successful is our use of various specialized vehicles designed to provide unmatched wildlife viewing opportunities. During our time in the Sossusvlei region, we explore in closed 4x4 Land Cruisers or Land Rovers that provide protection from the wind (and the sand that travels with it) in this vast, sandy landscape. In other regions, we will use open 4x4 Land Rovers or Land Cruisers with a unique suspension system and an open-top, open-sided, tiered seating arrangement designed to maximize wildlife viewing and provide a comfortable and safe ride over the often uneven terrain of Namibia's desert environs.

The open vehicles have 10 cushioned passenger seats, one in front next to the driver, followed by three rows of three seats each, though **we limit our capacity to just seven travelers, allowing a window seat for each guest**, for maximum comfort and the best viewing opportunities. The closed 4x4 vehicles have eight cushioned seats with a spacious interior providing plenty of room for travelers and their belongings. Both vehicles have a mini-fridge stocked with cold drinks and a small library with reference books and field guides. Each custom-built vehicle sports front bull bars and runner boards, as well as a full recovery kit, including spare tires and a high lift jack. Vehicles are updated or replaced regularly and meticulously maintained to provide our guests with an unmatched safari experience.

Included



Discovering Our Planet Together

- ▶ **Trip price includes:** Accommodations in luxury safari camps, services of Nat Hab's professional Expedition Leader(s), camp staff, premier open-sided 4-wheel drive Land Cruisers or Rovers, all meals from dinner on Day 1 through breakfast on final day, some alcoholic beverages, most gratuities, airport transfers on Day 1 and final day, all activities and entrance fees, all taxes, permits and service fees.
- ▶ **Internal air cost includes:** All light aircraft flights within the itinerary (this will be listed separately on our invoicing).

Not Included

Travel to and from the start and end point of your trip, some alcoholic beverages, some gratuities, passport and visa fees (if any), optional activities, items of a personal nature (phone calls, laundry and internet, etc.), airline baggage fees, airport and departure taxes (if any), required medical evacuation insurance, optional travel protection insurance.

Physical Requirements

Easy to Moderate

To participate in this trip, you must be able to walk unassisted at a steady pace for at least one mile over uneven terrain, climb steps to get into and out of our raised safari vehicles, and be able to tolerate daily outdoor excursions that may last 4-5 hours or even a full day at a time, sometimes in hot, windy and/or dusty conditions. Wildlife drives pose a particular type of physical demand on the body, as they require long hours of sitting and take place over terrain that is often very rough and bumpy, including dirt roads with many ruts and potholes. Travelers with back or neck problems, or other health issues that could be exacerbated by such conditions, should take this into consideration. While any walking safaris are considered optional, travelers must be able to walk unassisted to and from the vehicle to our camp accommodations, sometimes walking over uneven ground or on boardwalks and you will get the most out of your safari experience if you can walk a mile or two over uneven ground and rough or steep terrain without assistance. Climbing the sand dunes of Sossusvlei and walking over rocky terrain in search of rhinos constitute the most strenuous activities on this safari, but other more moderate walks without incline are also available, which still allow for enjoyment of the dunes. Days spent on safari are often long, as mornings typically start before daybreak and evening meals are served after sundown. In general, safari accommodations and vehicles are not climate-controlled and, depending on the season, temperatures can range from quite cold to extremely hot, so it is critical that travelers come prepared.

On custom or private departures with smaller groups, our ability to accommodate varying levels of physical abilities or interests is limited, since these trips are staffed with a single Expedition Leader who may be assisted, pending availability, by local guides.

Important Information About This Trip

This adventure encompasses the magic of Namibia's vast and varied landscape, from the world's tallest sand dunes to wildlife-rich Etosha National Park, without having to make long, hot, dusty drives that have traditionally been a part of a Namibia safari. A major benefit of this flight-based safari is the unbelievable view from the air. Towering dunes, endless desert, and rocky coastlines reveal Namibia's



natural diversity. Also by flying, we maximize our time on safari, rather than in transit. While the scenery - and the entire experience - is tremendous, the animal encounters here tend to be somewhat less plentiful than in some other safari destinations (though the Etosha portion is fantastic for wildlife!).

Mandatory Insurance

Since the areas we travel to are remote and wild (that's why we go there!), we strongly recommend that all guests have, at minimum, medical evacuation insurance for this program. While this is not required, we make this strong suggestion in the interest of our guests' safety. We recommend that your chosen independent insurance plan includes at least \$250,000 in medical evacuation coverage.

To protect your investment and to provide peace of mind while you travel, we also strongly recommend purchasing comprehensive travel insurance. Plans may cover everything from medical treatment to trip cancellations and delays and lost luggage. Please contact our office if you would like more information about the medical evacuation and comprehensive travel insurance policies we offer by calling 800-543-8917.

Getting There & Getting Home

Please plan to arrive Windhoek by 5 pm on Day 1 and you may depart Windhoek anytime after 1:20 pm on the final day.

We can best serve you if our Natural Habitat Adventures Travel Desk makes your reservations, as our staff is intimately familiar with the special requirements of these programs and can arrange the most efficient travel. Please call us at 800-543-8917. Note that while we offer you the best possible rates available to us on airfare and additional nights' accommodations, you may find special web rates or better fares online.



Natural Habitat & WWF: Discovering Our Planet Together

Natural Habitat Adventures • PO Box 3065 • Boulder, CO 80307

USA & Canada: 800-543-8917 • International: +1-303-449-3711

© 2022 Natural Habitat Adventures

Since 2003, Nat Hab has donated more than \$4.5 million to WWF's global conservation efforts and will continue to give 1% of gross sales plus \$150,000 annually through 2023 in support of WWF's mission to conserve nature and reduce the most pressing threats to the diversity of life on Earth. WWF® and ©1986 Panda Symbol are owned by WWF. All rights reserved.